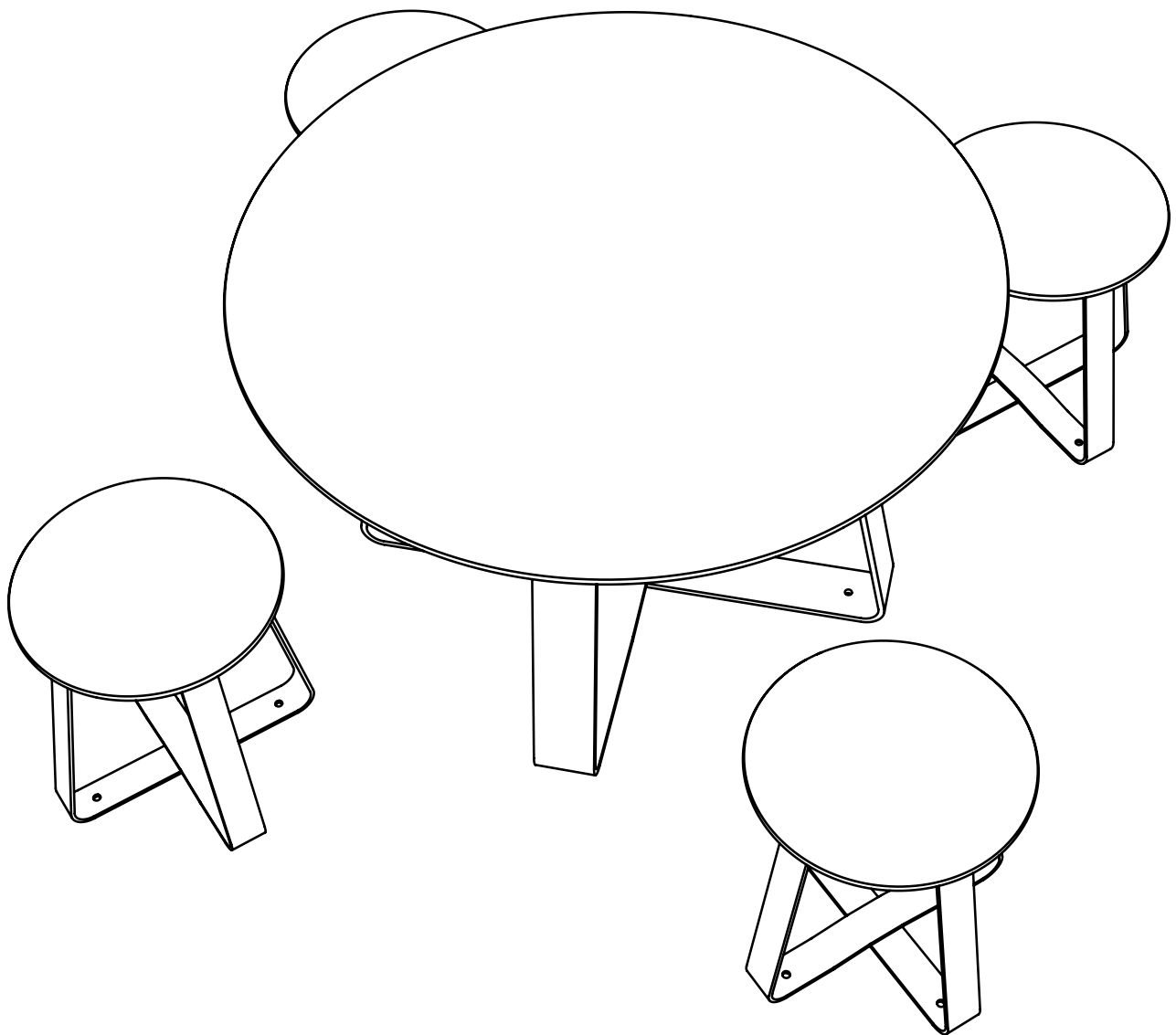
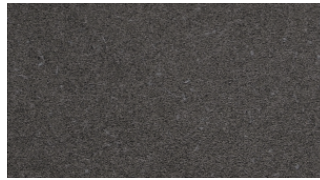


Hot Dot



Hot Dot - Matériau & Couleurs

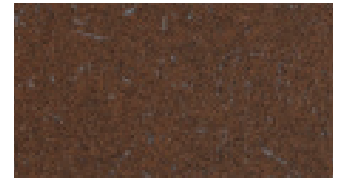
Stratifié haute pression



Cloudy anthracite
NCS S 7502-Y + 8000-N
RAL 7024



Cloudy grey
NCS S 4502-Y + 5502-Y
RAL 7030



Cloudy brown
NCS S 7020-Y60R + 8010-Y50R



Solid anthracite
NCS S 7005-R50B
RAL 7024



Solid grey
NCS S 4502-Y
RAL 7030



Solid cloud
NCS S 2002-G50Y
RAL 850-1



Solid white
NCS S 0502-G50Y
RAL 840-2



Neon red
NCS S 1085-Y90R
RAL 3020



Neon blue
NCS S 2060-R90B
RAL 250 50 40



Neon green
NCS S 1060-G80Y
RAL 250-3



Neon yellow
NCS S 1050-Y20R
RAL 070 70 60



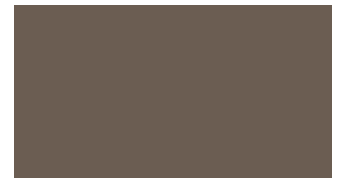
Dark red
NCS S 5040-Y90R
RAL 3009



Dark blue
NCS S 4030-B
RAL 240 40 20



Dark petrol
NCS S 6020-B30G
RAL 220 30 25



Dark soil
NCS S 6005-Y20R
RAL 7006



Pale red
NCS S 4040-Y80R
RAL 040 40 40



Pale blue
NCS S 3020-B10G
RAL 220 60 15

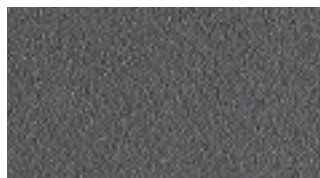


Pale petrol
NCS S 4010-G30Y
RAL 130 60 10



Pale Sand
NCS S 1505-Y20R
RAL 080 80 05

Pièces en acier



Graphite grey
NCS S 7500-N
RAL 7024